

# 706 FRESE IN PCD SIMMETRICHE

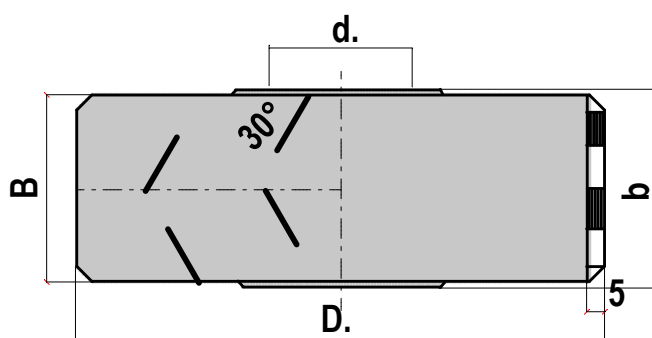
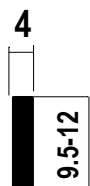
JOINTING CUTTER IN PCD SIMMETRIC AXIAL ANGLE 30°

FRESE IN DIAMANTE PCD  
 ANGOLO ASSIALE 30°  
 DISPOSIZIONE SIMMETRICA

706

MEC

Codice nr. DIA	D. mm.	B mm.	b mm.	d mm.	DKN	Z	E
706 180 28	180	28	30	40	10x5	3+3	30°
706 180 30	180	30	32	40	10x5	3+3	30°
706 180 32	180	32	34	40	10x5	3+3	30°
707 200 28	200	28	30	40	10x5	3+3	30°
706 200 30	200	30	32	40	10x5	3+3	30°
706 200 32	200	32	34	40	10x5	3+3	30°



**DIMENSIONI E 54° ASSIALE SU RICHIESTA**  
 DIMENSIONS AND 54° AXIAL ANGLE ON REQUEST

# 706 A FRESE IN PCD ASIMMETRICHE

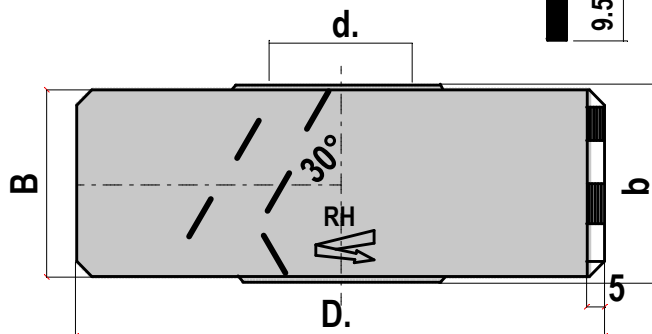
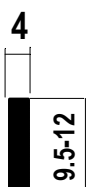
JOINTING CUTTER IN PCD ASIMMETIC AXIAL ANGLE 30°

FRESE IN DIAMANTE PCD  
 ANGOLO ASSIALE 30°  
 DISPOSIZIONE ASIMMETRICA

706A

MEC

Codice nr. DIA RH	Codice nr. DIA LH	D. mm.	B mm.	b mm.	d mm.	DKN	Z	E
706A 180 37R	706A 180 37L	180	37		40	10x5	3+3	30°
706A 180 46R	706A 180 46L	180	46		40	10x5	3+3	30°
706A 180 65R	706A 180 65L	180	65		40	10x5	3+3	30°
706A 200 37R	706A 200 37L	200	37		40	10x5	3+3	30°
706A 200 46R	706A 200 46L	200	46		40	10x5	3+3	30°
706A 200 65R	706A 200 65L	200	65		40	10x5	3+3	30°



RH = ROTAZIONE DESTRA RIGHT ROTATION  
 LH = ROTAZIONE SINISTRA LEFT ROTATION

**DIMENSIONI E 54° ASSIALE SU RICHIESTA**  
 DIMENSIONS AND 54° AXIAL ANGLE ON REQUEST